

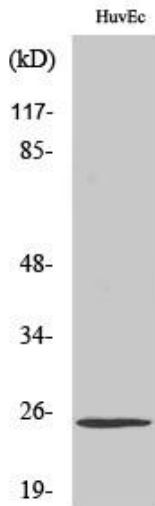


# TCEAL6 Polyclonal Antibody

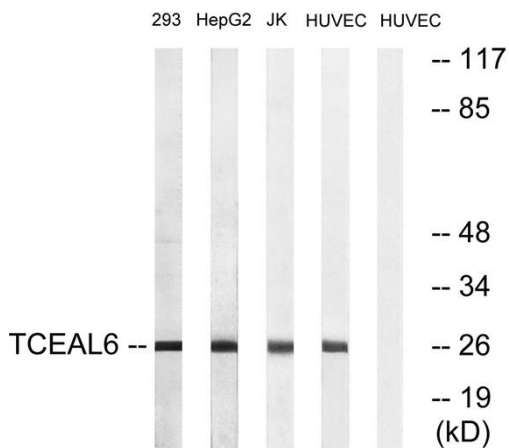
<b>Catalog No</b>	YP-Ab-02087
<b>Isotype</b>	IgG
<b>Reactivity</b>	Human;Rat;Mouse;
<b>Applications</b>	WB;ELISA
<b>Gene Name</b>	TCEAL6
<b>Protein Name</b>	Transcription elongation factor A protein-like 6
<b>Immunogen</b>	The antiserum was produced against synthesized peptide derived from human TCEAL6. AA range:61-110
<b>Specificity</b>	TCEAL6 Polyclonal Antibody detects endogenous levels of TCEAL6 protein.
<b>Formulation</b>	Liquid in PBS containing 50% glycerol, 0.5% BSA and 0.02% sodium azide.
<b>Source</b>	Polyclonal, Rabbit,IgG
<b>Purification</b>	The antibody was affinity-purified from rabbit antiserum by affinity-chromatography using epitope-specific immunogen.
<b>Dilution</b>	Western Blot: 1/500 - 1/2000. ELISA: 1/10000. Not yet tested in other applications.
<b>Concentration</b>	1 mg/ml
<b>Purity</b>	≥90%
<b>Storage Stability</b>	-20°C/1 year
<b>Synonyms</b>	TCEAL6; Transcription elongation factor A protein-like 6; TCEA-like protein 6; Transcription elongation factor S-II protein-like 6
<b>Observed Band</b>	25kD
<b>Cell Pathway</b>	Nucleus .
<b>Tissue Specificity</b>	Brain,
<b>Function</b>	function:May be involved in transcriptional regulation.,PTM:Phosphorylated upon DNA damage, probably by ATM or ATR.,similarity:Belongs to the TFS-II family. TFA subfamily.,
<b>Background</b>	function:May be involved in transcriptional regulation.,PTM:Phosphorylated upon DNA damage, probably by ATM or ATR.,similarity:Belongs to the TFS-II family. TFA subfamily.,
<b>matters needing attention</b>	Avoid repeated freezing and thawing!
<b>Usage suggestions</b>	This product can be used in immunological reaction related experiments. For more information, please consult technical personnel.



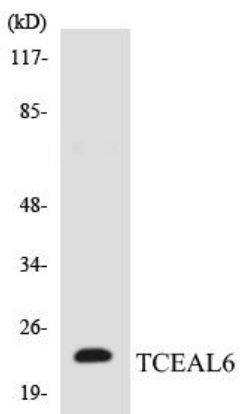
## Products Images



Western Blot analysis of various cells using TCEAL6 Polyclonal Antibody cells nucleus extracted by Minute TM Cytoplasmic and Nuclear Fractionation kit (SC-003, Inventbiotech, MN, USA).



Western blot analysis of lysates from HUVEC, 293, HepG2, and Jurkat cells, using TCEAL6 Antibody. The lane on the right is blocked with the synthesized peptide.



Western blot analysis of the lysates from HUVEC cells using TCEAL6 antibody.